

# Jandy® NeverLube® Backwash Valve Replacement Kits

## ⚠ CAUTION

**FOR YOUR SAFETY:** This product must be installed and serviced by authorized personnel qualified in pool/spa installation and maintenance. Improper installation and/or operation will void the warranty.

These instructions are to be used with the following Jandy Replacement Kits:

**R0552200-- NeverLube® Backwash Valve Lid Replacement Kit**

**R0552300-- NeverLube® Backwash Valve Diverter Replacement Kit**

**R0552400-- NeverLube® Backwash Valve O-Ring Replacement Kit**

This document gives instructions for replacing the lids, diverters, and o-rings on the Jandy® NeverLube® Backwash Valve. These instructions must be followed exactly. Read through the instructions completely before starting the procedure. Please save these instructions.

**NOTE:** The following procedure explains how to replace *both* top and bottom lids, diverters, and o-rings. An individual diverter can be replaced; however, be sure to replace all o-rings.

1. Turn off power to the system and drain the filter. Position system valves to isolate the NeverLube® Backwash Valve.

### ⚠ Warning

Ensure that all electrical power to the system is turned off before approaching, inspecting or troubleshooting any leaking valves that may have caused other electrical devices in the surrounding area to get wet.

2. Loosen the locking knob and remove the handle.
3. Remove the 16 screws from the top and bottom valve lids. Remove both lids and their corresponding o-rings.
4. Slide the diverter assemblies out of the valve. Remember the position of the diverter. The diverter shaft and o-rings will come out with one of the diverters.
5. Referring to the installation order in Figure 1, place two (2) o-rings and one (1) par ring on the bottom of each diverter. Then place two (2) o-rings on the top diverter shaft.

**NOTE:** Ensure the sealing surface is clean and free of debris. Lubricate the o-rings with a silicone-based lubricant.

6. Place the new diverter shaft into one of the new diverters. The diverter shaft is keyed; therefore, the shaft will fit *only one way* into

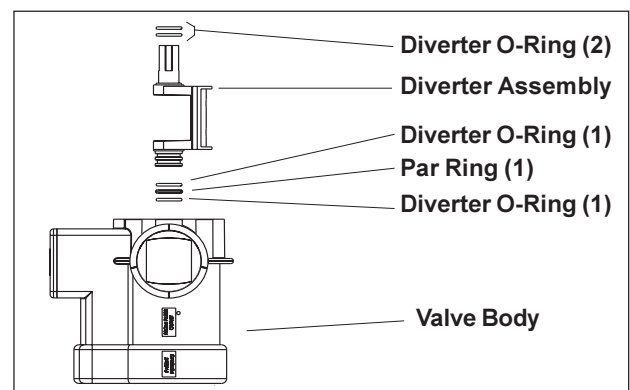


Figure 1. Backwash Valve (Top Half)

### ⚠ Caution

Do not lubricate the upper and lower diverter seals.

the diverter (see Figures 2 and 3 on page 2).

**NOTE:** The top diverter assembly of the valve has a *blue* seal. The bottom diverter assembly has a *black* seal. Please note that the top half of the valve refers to the section of the valve with the port marked **From Filter Outlet**. The bottom half of the valve refers to the section of the valve with the port marked **To Filter Inlet**.

7. Slide the diverter/shaft assembly up into the bottom of the valve. Rotate the diverter to the position it was removed.
- NOTE:** Ensure the valve lid and o-ring surfaces are clean.
8. Place a new lid o-ring on both lids and replace the lids. The lids are keyed; therefore the lids can be placed in *only one direction*.
9. Replace the 16 screws and hand tighten only.
10. Replace the handle and locking knob. Hand tighten the locking knob.
11. Restore power to the system and check the valve for proper operation.

Replacement Kits Parts List

Key No.	Description	Qty.	Order Part No:
1	Lid Replacement Kit		R0552200
	Lid, Top - Keyed (See Fig. 2)	1	
	Lid, Bottom - Keyed (See Fig. 3)	1	
	O-ring, 151	2	
	O-ring, 116	4	
	Screws, Machine #14	16	
	Instructions, Replacement Kit	1	
2	Diverter Replacement Kit		R0552300
	Diverter Shaft	1	
	Diverter Assembly, Top, Blue Seal	1	
	Diverter Assembly, Bottom, Black Seal	1	
	Instructions, Replacement Kit	1	
3	O-Ring Replacement Kit		R0552400
	Par Ring	2	
	Lid O-ring	2	
	Diverter O-ring	8	
	Instructions, Replacement Kit	1	

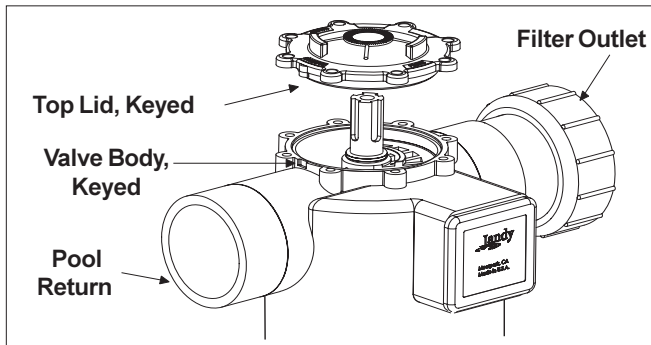


Figure 2. NeverLube® Backwash Valve Lid (Top Half of Valve)

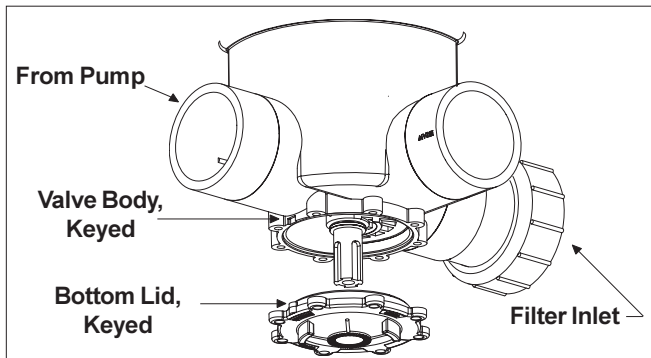


Figure 3. NeverLube® Backwash Valve Lid (Bottom Half of Valve)

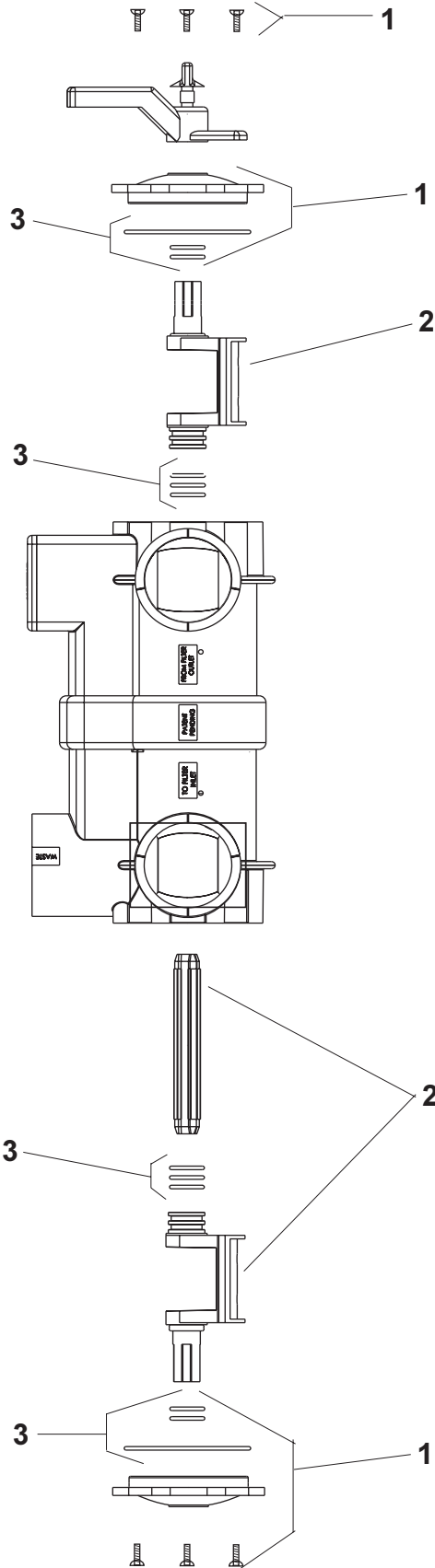


Figure 4. Backwash Valve, Exploded View