

Jandy® Slide Valve Handle Replacement Kit

FOR YOUR SAFETY: This product must be installed and serviced by a professional pool/spa service technician. The procedures in this instruction sheet must be followed exactly. Ensure that all electrical power to the system is turned off before approaching, inspecting or troubleshooting any leaking valves that may have caused other electrical devices in the surrounding area to get wet. Failure to do so could result in an electrical hazard which could result in death or serious injury due to electrical shock, and may also cause damage to property and/or operation will void the warranty.

These instructions are to be used with the following Jandy Replacement Kits:

R0442300-- Slide Valve Handle Replacement Kit

This document gives instructions for replacing the handle, lid union nut, lid o-ring, and roll pins on the Jandy® Slide Valve. These instructions must be followed exactly. Read through the instructions completely before starting the procedure. Please save these instructions.

To identify the parts that are included in your kit(s), refer to the parts list and exploded view located on page 3 of this manual. If any parts are missing from the kit please call your local Jandy distributor for assistance. For technical assistance please contact our Technical Service Department at (707) 776-8200, extension 260.

⚠ WARNING

To prevent equipment damage and possible injury, the pump must be turned off and the pressure relief valve on top of the filter must be opened. Wait for all air to evacuate the system

Section 1. Remove Slide Valve Handle, Lid Union Nut, Lid O-ring, and Shaft Roll Pin

1. Turn off power to the system. Release all pressure from the system at the filter and drain the filter. Position system valves to isolate the slide valve.
2. Loosen the existing lid union nut (see Figure 1).
3. Grab the existing slide valve handle and pull the shaft assembly out of the valve (see Figure 2).
4. Remove the existing lid o-ring (see Figure 2).

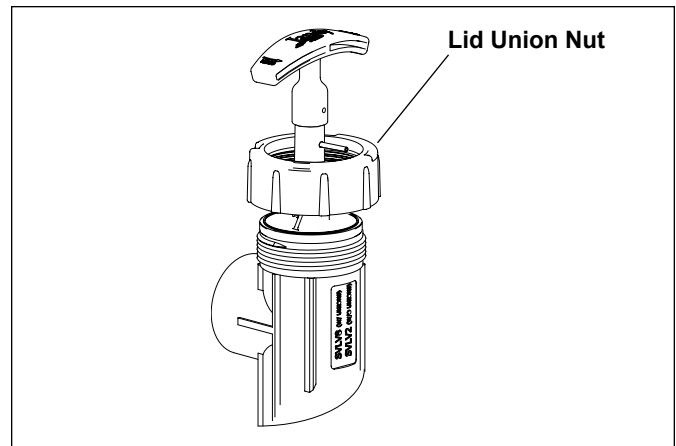


Figure 1. Loosen Lid Union Nut

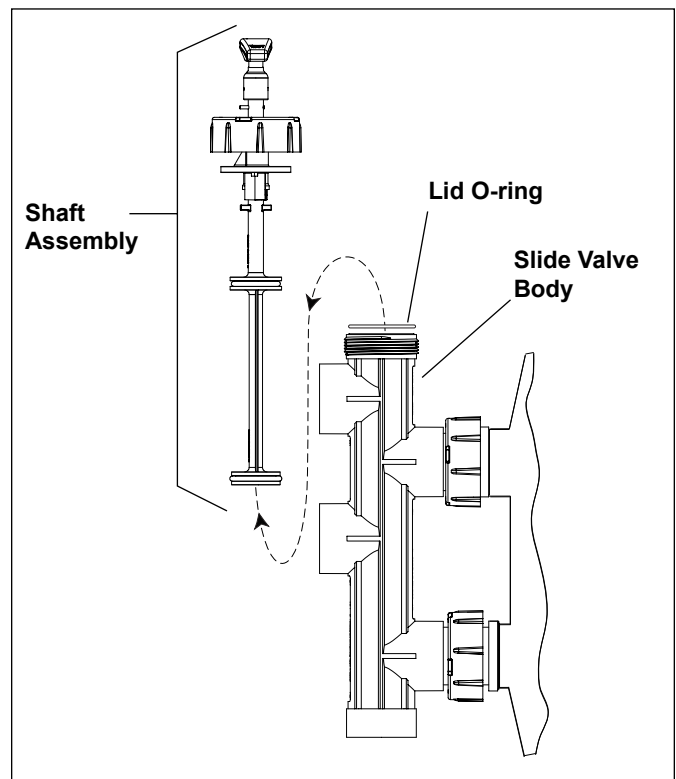


Figure 2. Remove Slide Valve Shaft Assembly

- Using a punch and a ball peen hammer, tap the existing roll pin out of the slide valve handle (see Figure 3). Remove the handle.

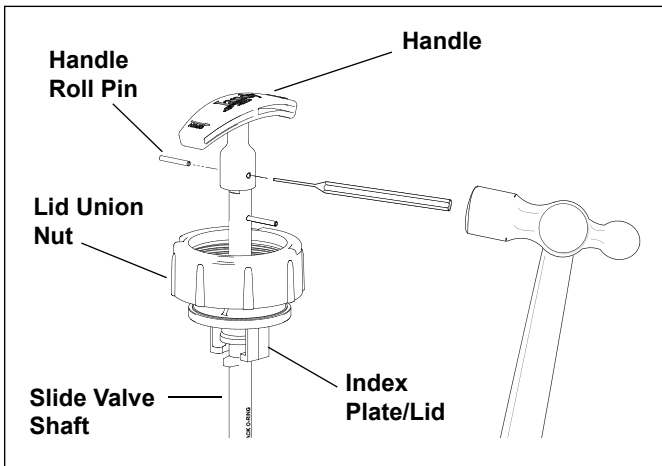


Figure 3. Remove Handle Roll Pin - Top Half of Slide Valve Shaft Shown

- Slide the existing lid union nut off the slide valve shaft.
- Using a punch and ball peen hammer, tap the existing roll pin out of the slide valve shaft (see Figure 4).

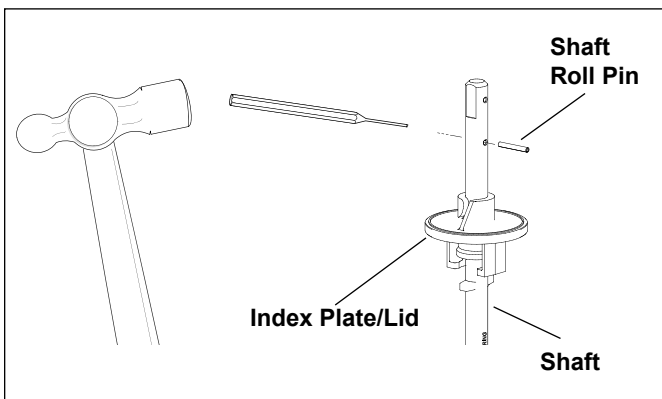


Figure 4. Remove Shaft Roll Pin - Top Half of Slide Valve Shaft Shown

Section 2. Install New Shaft Roll Pin

NOTE Be aware that the roll pins are different lengths; the handle roll pin is 1" long and the shaft roll pin is $1\frac{3}{16}$ " long.

- Remove one (1) new roll pin from the packaging. The replacement kit comes with two (2) roll pins, one is to be used to secure the handle.
- Place the new roll pin into the hole provided in the shaft above the index plate/lid. Using a ball peen hammer, tap the roll pin into the hole until the start end of the pin is flush with the shaft. The remaining section of the roll pin will protrude out of the shaft.

Section 3. Install New Slide Valve Handle, Lid Union Nut, and Lid O-ring

- Remove the new lid union nut from the packaging and slide onto the slide valve shaft until it rests on the index plate/lid.
- Remove the new handle from the packaging and place on the slide valve shaft.

NOTE The handle and slide valve shaft are keyed; therefore the handle will fit only one way on the shaft.

- Ensure that the holes on the shaft and handle line up correctly.
- Remove the new roll pin from the packing. Using a punch and ball peen hammer, tap the roll pin into the hole of the handle and shaft. Ensure that the roll pin is inserted (tapped in) so that it is flush with the handle surface.

NOTE Be aware that the roll pins are different lengths; the handle roll pin is 1" long and the shaft roll pin is $1\frac{3}{16}$ " long.

- Wash the lid surface of the valve (where the lid o-ring is seated) and dry with a lint-free cloth. **Ensure that all debris is removed.**
- Remove the new lid o-ring from the packaging and lubricate with 100% silicone grease lubricant, like Magic Lube®. **Do not use any lubricant containing petroleum products.**
- Place the new lid o-ring in the lid placement groove on the top of the slide valve.
- Place the shaft back into the slide valve. Ensure that the index plate/lid is completely seated on the valve body.

NOTE The index plate/lid is keyed to prevent rotation in the valve body.

- Tighten the lid union nut.
- Place the slide valve in the operating position for filtration mode. **(DE Filters)** Ensure that the slide valve handle is fully depressed (handle and piston pushed all the way down). Turn the handle until the stainless steel pin on the piston locks into the index plate/lid. **(Sand Filters)** Ensure that the slide valve handle is fully extended (handle pulled all the way up).
- Restore power to the system and check the valve for proper operation.

Caution

To avoid costly equipment damage, after verifying proper water flow and *prior* to putting system into normal operating conditions, flush the system using Backwash mode until the waste water is clean. Refer to *Section 4* in the *Jandy Slide Valve Installation and Operation Manual* for Backwash mode operation instructions.

Section 4. Replacement Kit Parts List

Key No.	Description	Qty.	Order Part No.
1	Handle Replacement Kit		R0442300
	Handle	1	
	Roll Pin, Handle (1")	1	
	Roll Pin, Shaft (¹³ / ₁₆ "	1	
	Lid Union Nut	1	
	Lid O-ring	1	

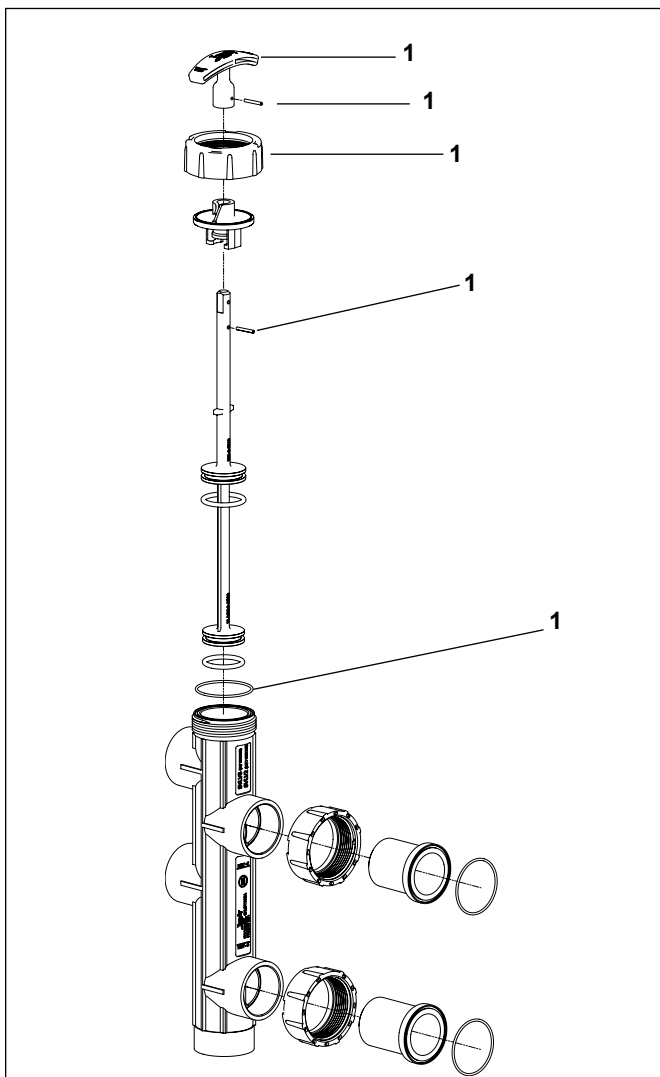


Figure 5. Slide Valve Exploded View

